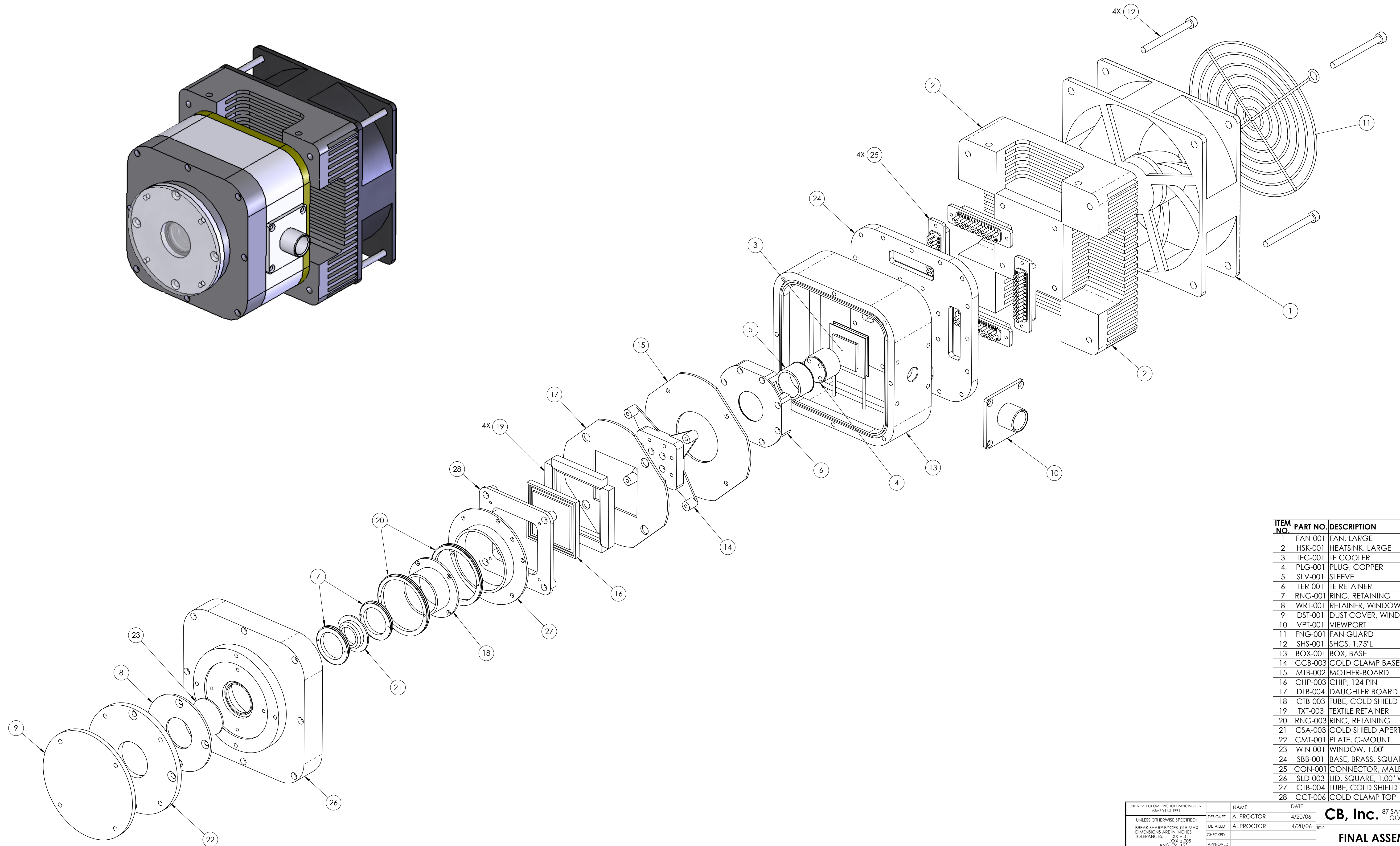


REVISION HISTORY		DATE	APPR.
REV	DESCRIPTION		
A	INITIAL RELEASE	4/20/06	AP
B	ITEM 28, CCT-006 WAS CCT-003.	6/08/06	AP



ITEM NO.	PART NO.	DESCRIPTION	QTY.
1	FAN-001	FAN, LARGE	1
2	HSK-001	HEATSINK, LARGE	1
3	TEC-001	TE COOLER	1
4	PLG-001	PLUG, COPPER	1
5	SLV-001	SLEEVE	1
6	TER-001	TE RETAINER	1
7	RNG-001	RING, RETAINING	2
8	WRT-001	RETAINER, WINDOW	1
9	DST-001	DUST COVER, WINDOW	1
10	VPT-001	VIEWPORT	1
11	FNG-001	FAN GUARD	1
12	SHS-001	SHCS, 1.75"L	4
13	BOX-001	BOX, BASE	1
14	CCB-003	COLD CLAMP BASE, 124 PIN	1
15	MTB-002	MOTHER-BOARD	1
16	CHP-003	CHIP, 124 PIN	1
17	DTB-004	DAUGHTER BOARD	1
18	CTB-003	TUBE, COLD SHIELD	1
19	TXT-003	TEXTILE RETAINER	4
20	RNG-003	RING, RETAINING	2
21	CSA-003	COLD SHIELD APERTURE	1
22	CMT-001	PLATE, C-MOUNT	1
23	WIN-001	WINDOW, 1.00"	1
24	SBB-001	BASE, BRASS, SQUARE	1
25	CON-001	CONNECTOR, MALE, 25 PIN	4
26	SLD-003	LID, SQUARE, 1.00" WINDOW	1
27	CTB-004	TUBE, COLD SHIELD	1
28	CCT-006	COLD CLAMP TOP	1

INTERPRET GEOMETRIC TOLERANCING PER ASME Y14.5-1994

UNLESS OTHERWISE SPECIFIED:  
 BREAK SHARP EDGES, D15 MAX  
 DIMENSIONS ARE IN INCHES  
 TOLERANCES: .XX ±.01  
 .XXX ±.005  
 ANGLES: ±2°  
 MACHINE SURFACE: 125

DESIGNED: A. PROCTOR 4/20/06  
 DETAILED: A. PROCTOR 4/20/06  
 CHECKED:  
 APPROVED:

NAME: A. PROCTOR  
 DATE: 4/20/06

87 SANTA FELICIA DRIVE  
 GOLETA, CA 93117

**CB, Inc.**

TITLE: **FINAL ASSEMBLY**

SEE PARTS LIST

FINISH: NONE

ACT WT: .XX LBS CAD GENERATED DWG SCALE: 1:1 (DO NOT SCALE DRAWING) SHEET 1 OF 1

SIZE: DWG NO. **D CBI-002** REV: **B**