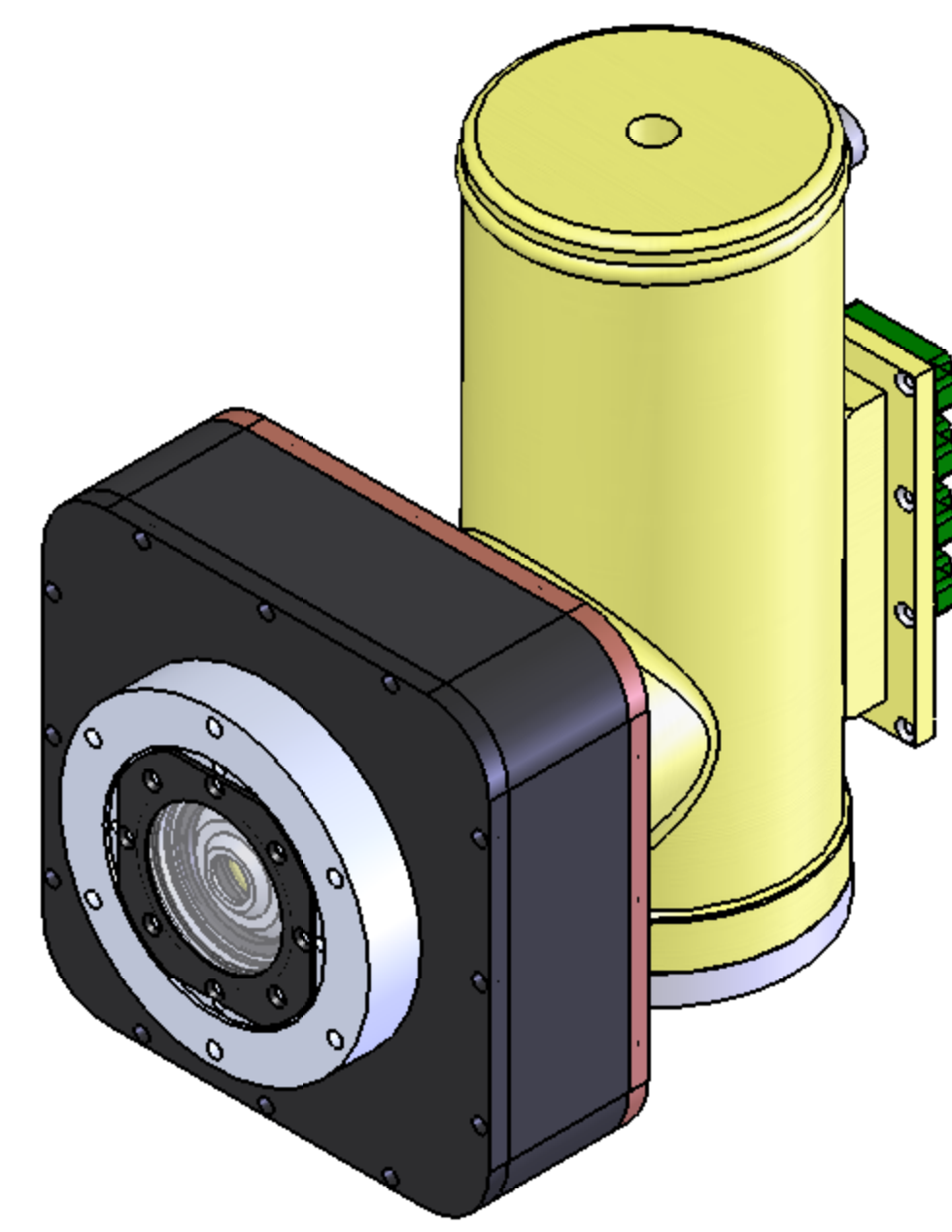
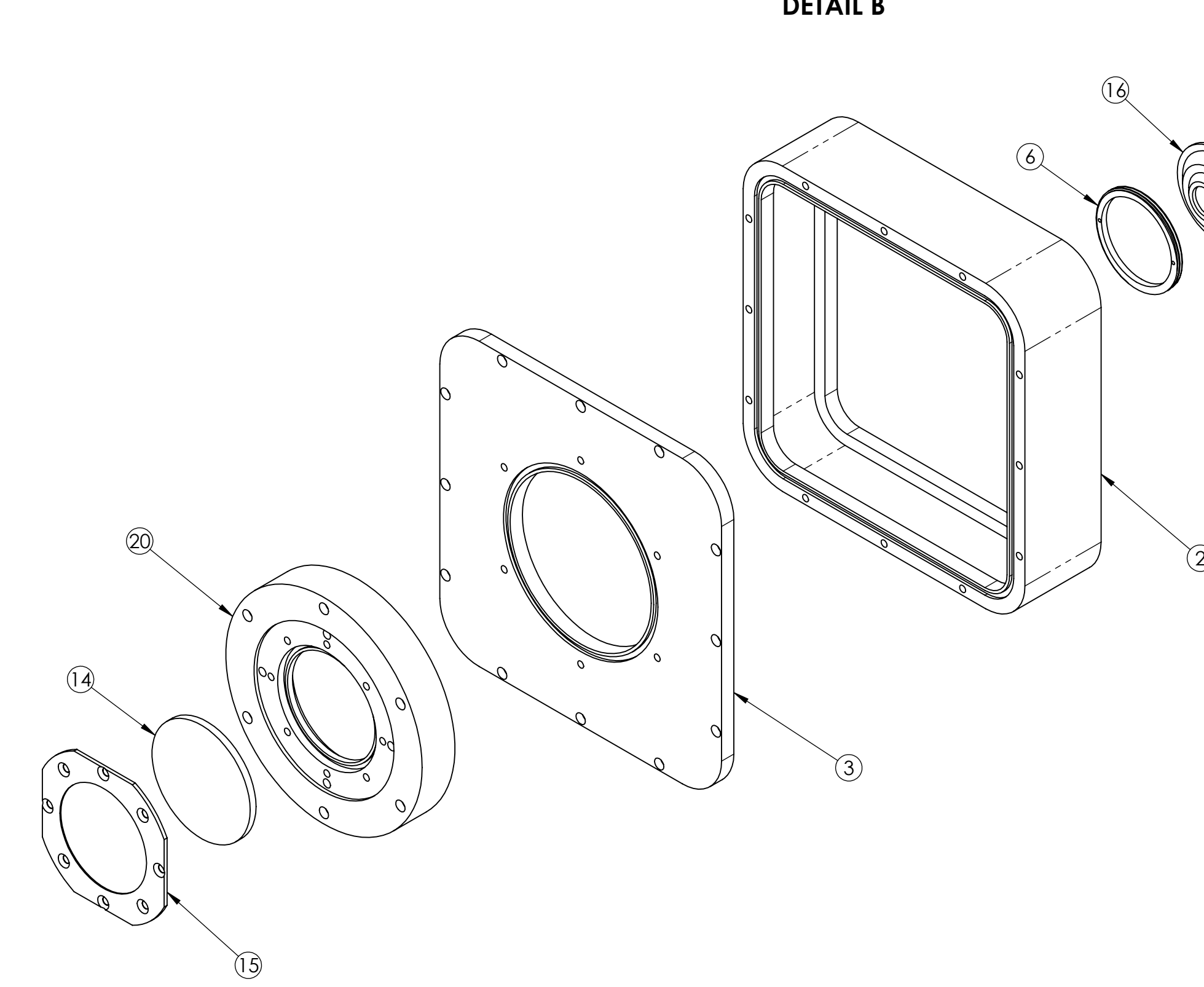
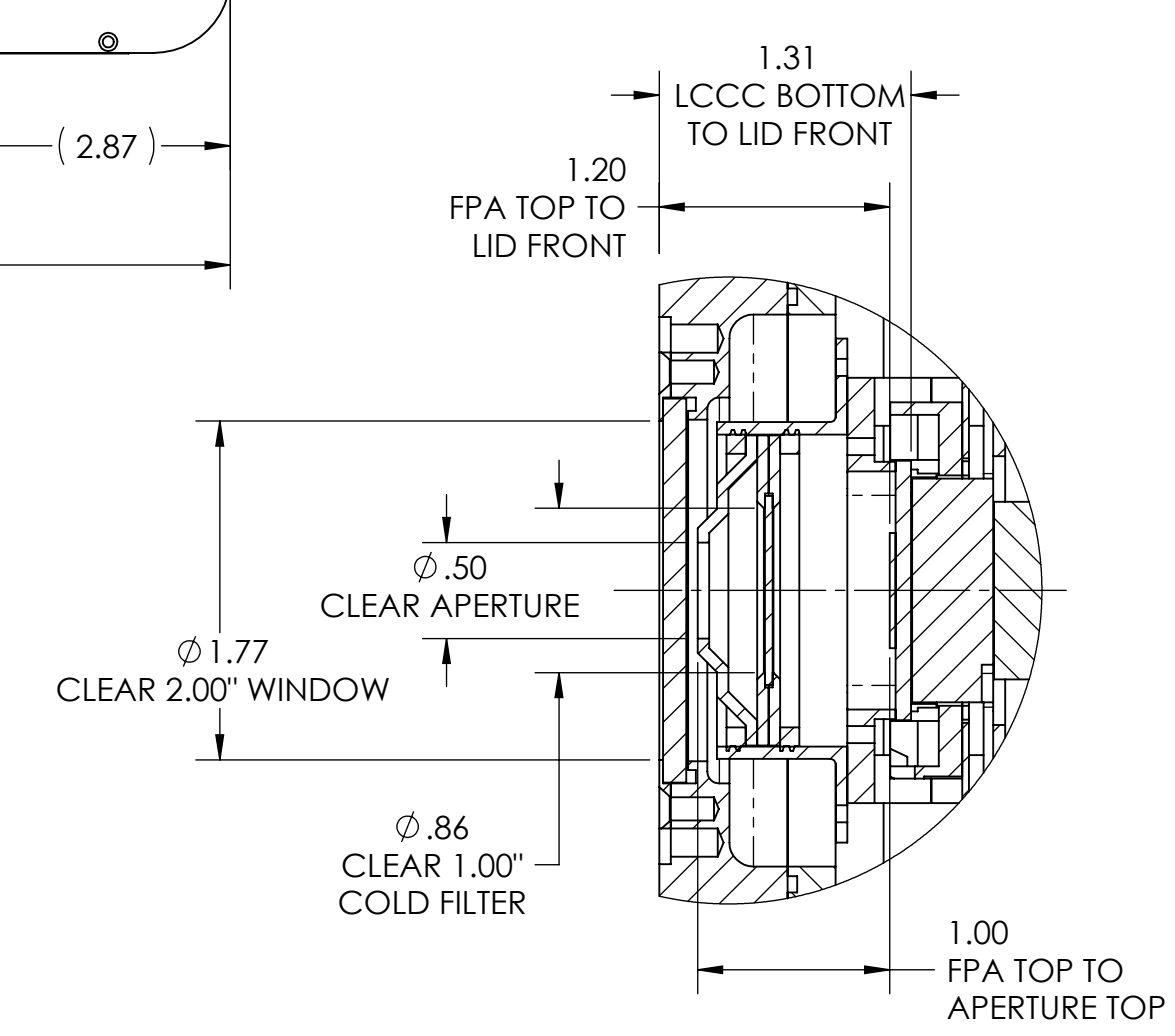
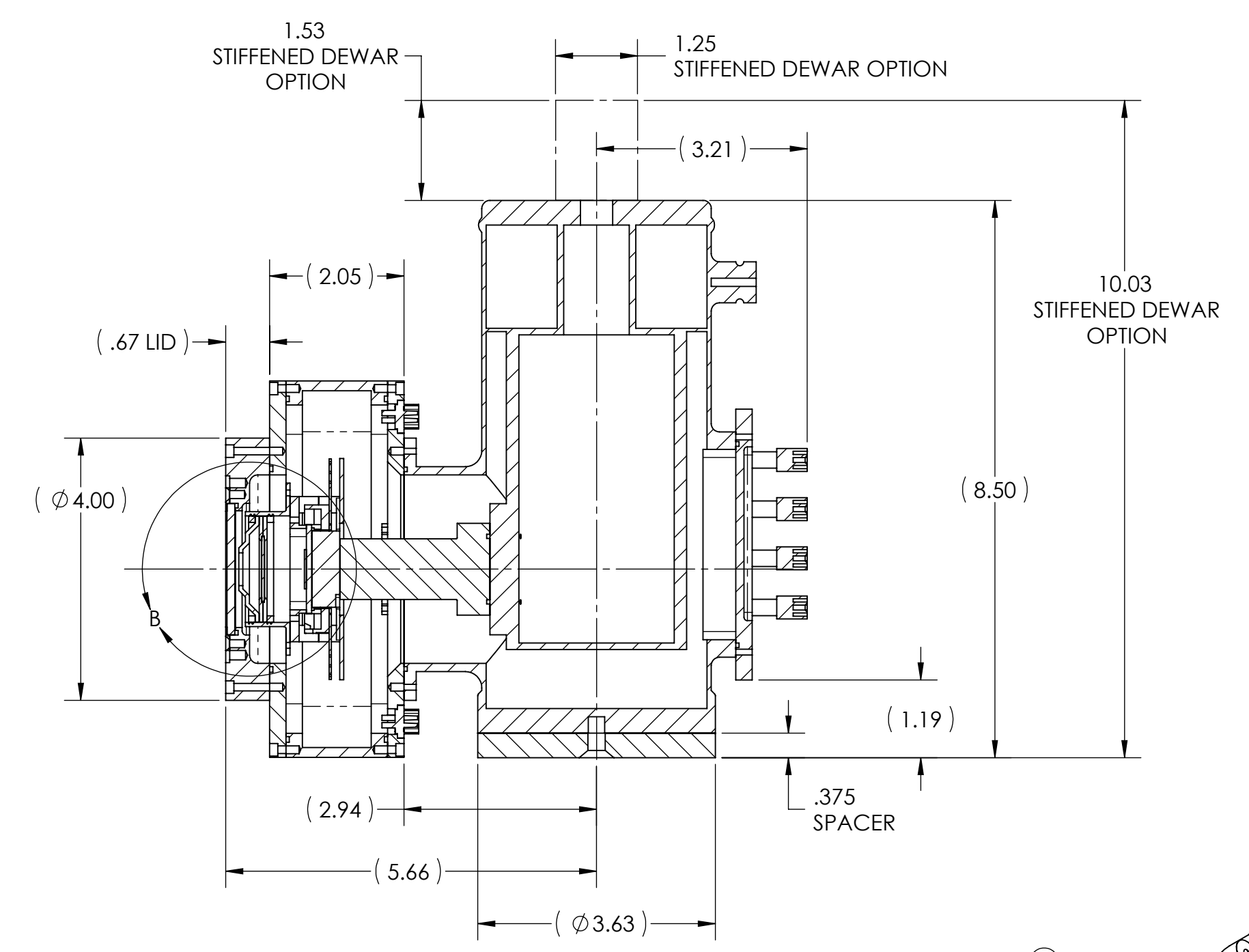
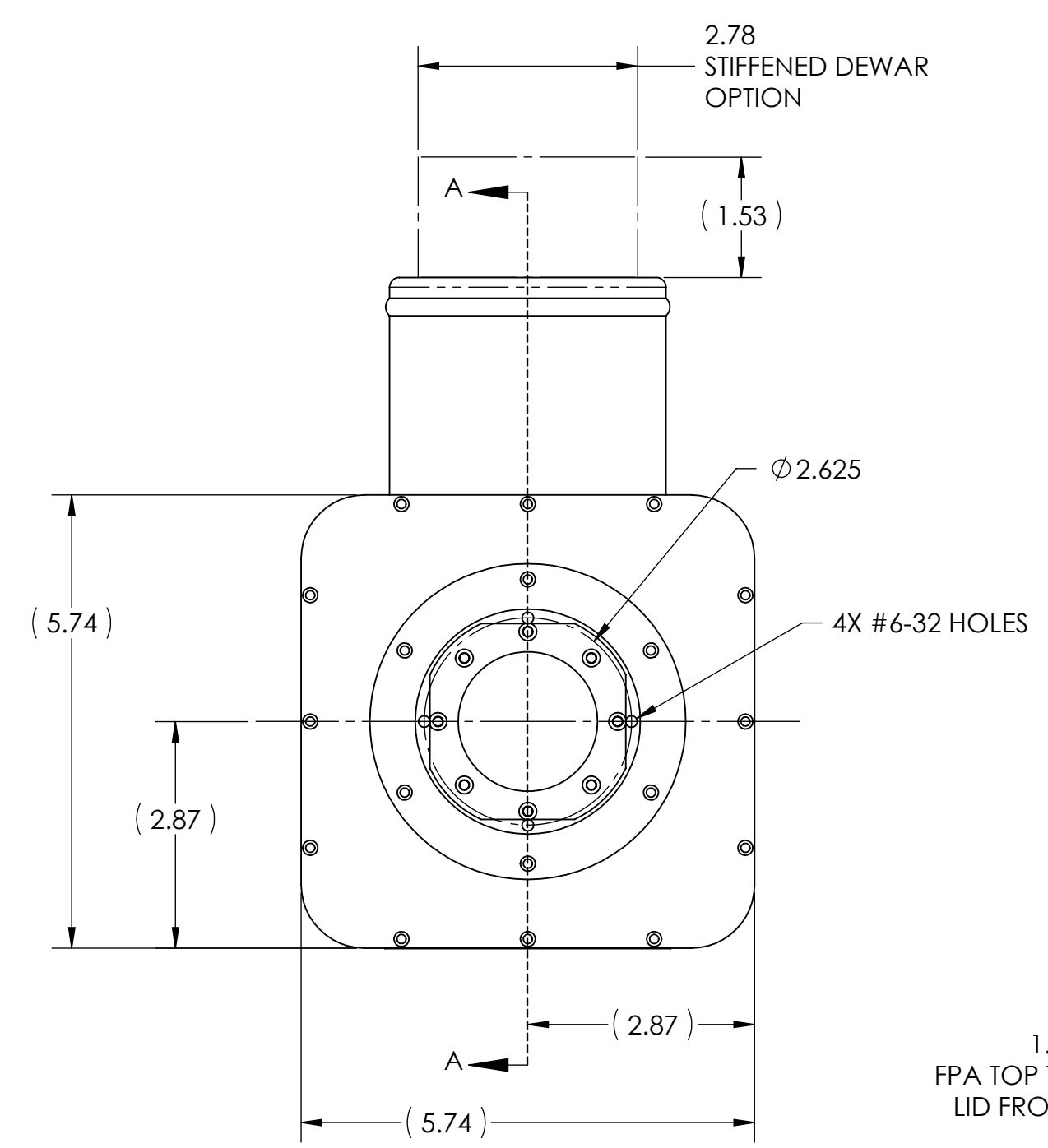


REVISION HISTORY		DATE	APPR.
REV	DESCRIPTION		
A	INITIAL RELEASE	11/25/08	



ITEM NO.	PART NO.	DESCRIPTION	QTY.
1	DWR-001	DEWAR BODY, LN2, STANDARD	1
2	BOX-007	BOX, SQUARE, X-LARGE	1
3	SLD-017	LID, SQUARE, X-LARGE	1
4	WLD-014	WELDMENT, BASE & CONNECTOR ASSY	1
5	YAM-003	YAM, 100 PIN, MOD.	1
6	RNG-003	RING, THREADED, FOR 1.6" COLD TUBE	2
7	SPC-015	SPACER, DEWAR	1
8	CHP-002	CHIP, 100 PIN, 1.35 x 1.35 x .080	1
9	ASY-011	DEWAR BACK ASSY, GENERIC	1
10	PED-009	PEDESTAL, COLD FINGER	1
11	MTB-001	MOTHER BOARD	1
12	CCB-006	COLD CLAMP BASE	1
13	FPA-001	CHIP, PURCHASED	1
14	WIN-004	WINDOW, 2.00" X .120" THK	1
15	WRT-005	RETAINER, WINDOW	1
16	CSA-021	APERTURE, COLD SHIELD, 0.5" I.D.	1
17	BFL-010	BAFFLE, 1.00" FILTER	2
18	FIL-001	FILTER, 1.00" DIA x .040" THK	1
19	DTB-017	DAUGHTER BOARD, 100 PIN, YAM	1
20	RLD-015-01	LID, ROUND, 2.00" WINDOW, LN2, MOD	1
21	CTB-002-01	TUBE, COLD SHIELD, 1.6" I.D., MOD	1
22	CCT-012-02	COLD CLAMP TOP, 100 PIN, MOD.	1

UNLESS OTHERWISE SPECIFIED:
 BREAK: SHARP EDGES, D15 MAX
 DIMENSIONS ARE IN INCHES
 TOLERANCES: .XX ±.01
 .XXX ±.005
 ANGLES: 12°
 MACHINE SURFACE: 125

INTERPRET GEOMETRIC TOLERANCING PER
 ASME Y14.5-1994

DESIGNED: A. PROCTOR DATE: 12/31/07
 DETAILED: A. PROCTOR DATE: 11/25/08

NAME: A. PROCTOR DATE: 12/31/07
 TITLE: DEWAR ASSY, LN2, 100 PIN, 2.00" WINDOW

PROPRIETARY AND CONFIDENTIAL
 THE INFORMATION CONTAINED IN THIS DRAWING IS THE SOLE PROPERTY OF CB, INC. ANY REPRODUCTION IN PART OR AS A WHOLE WITHOUT THE WRITTEN PERMISSION OF CB, INC. IS PROHIBITED.

87 SANTA FELICIA DRIVE
 GOLETA, CA 93117

REV: A

SCALE: NONE

SHEET 1 OF 1