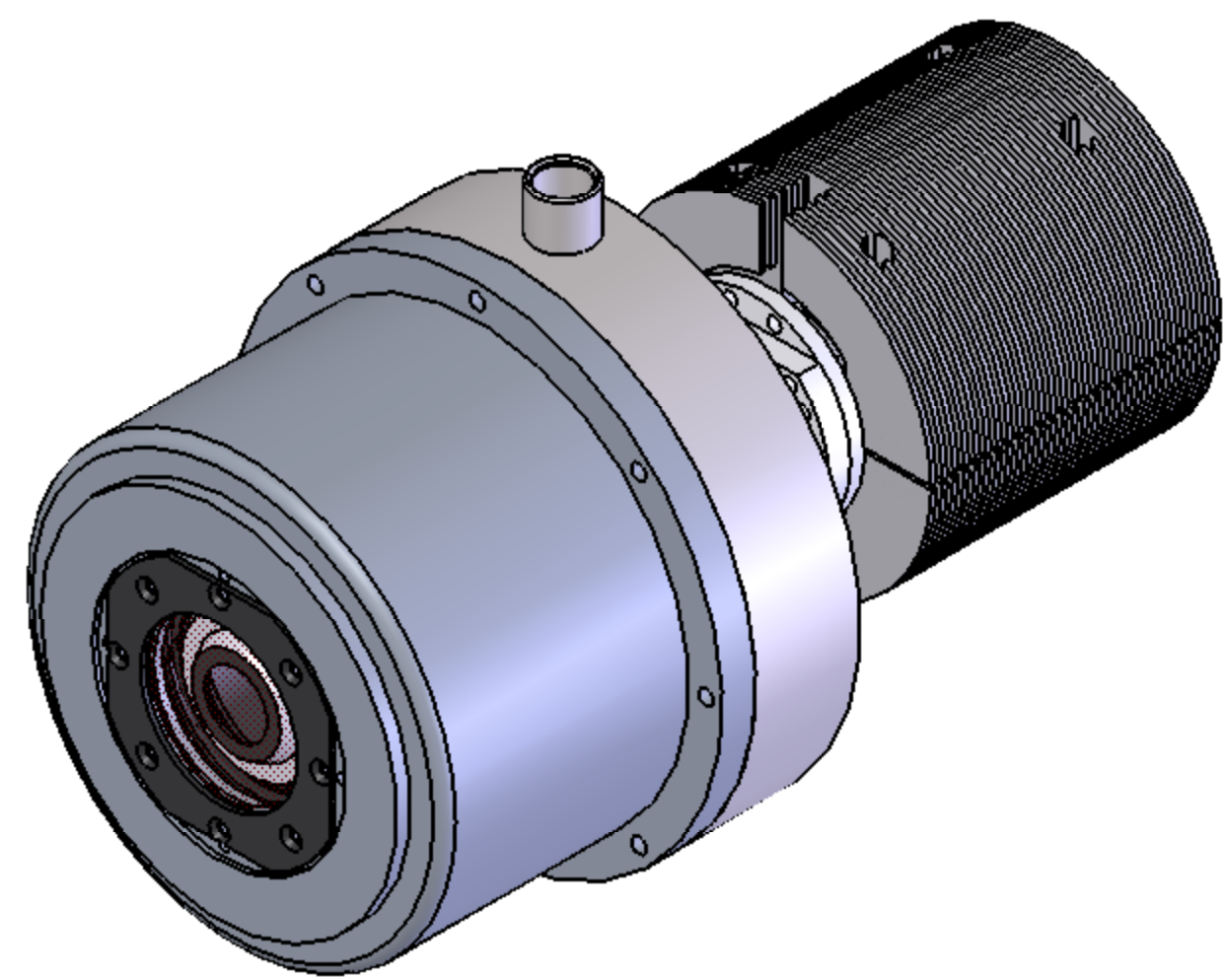
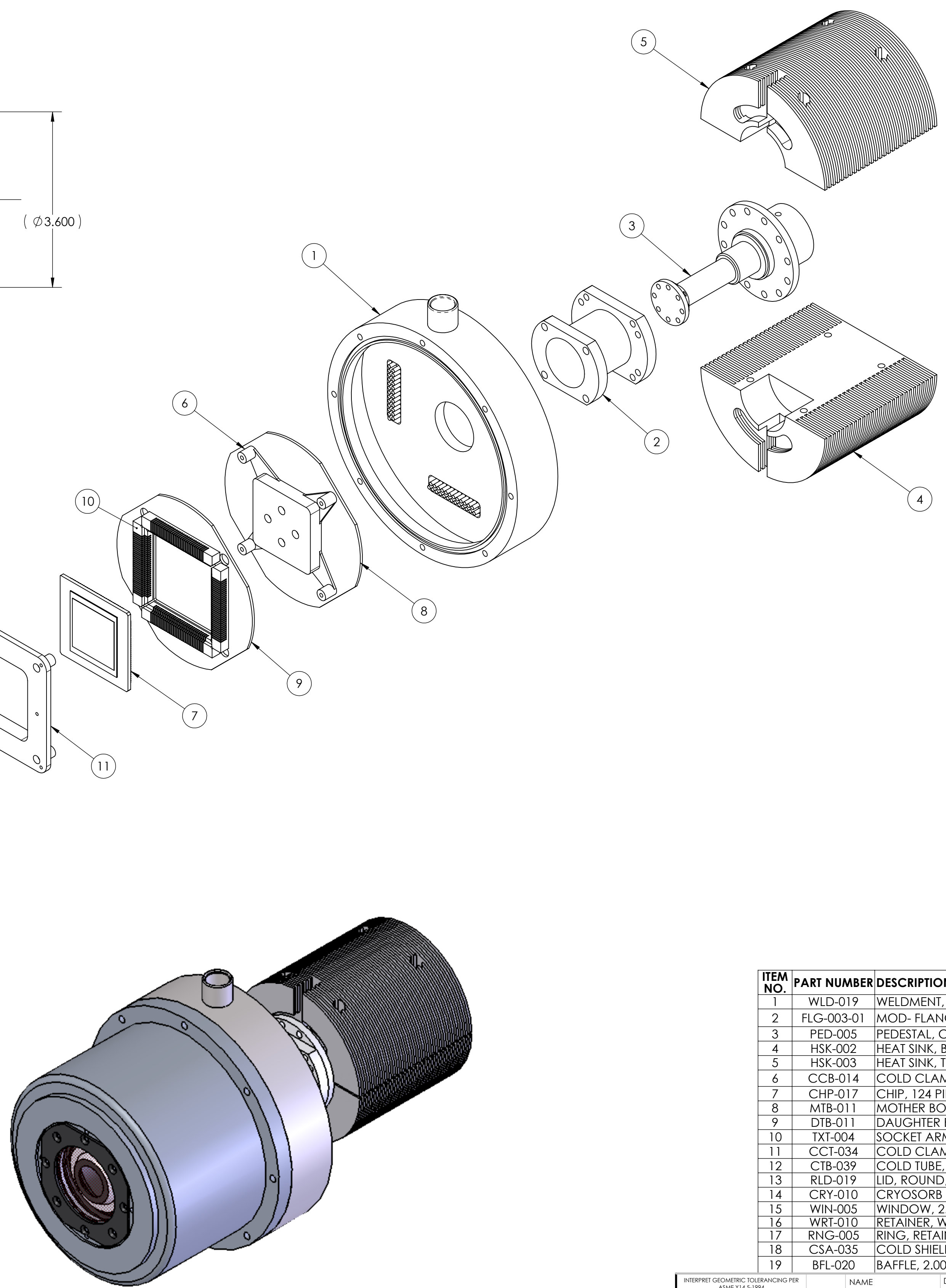
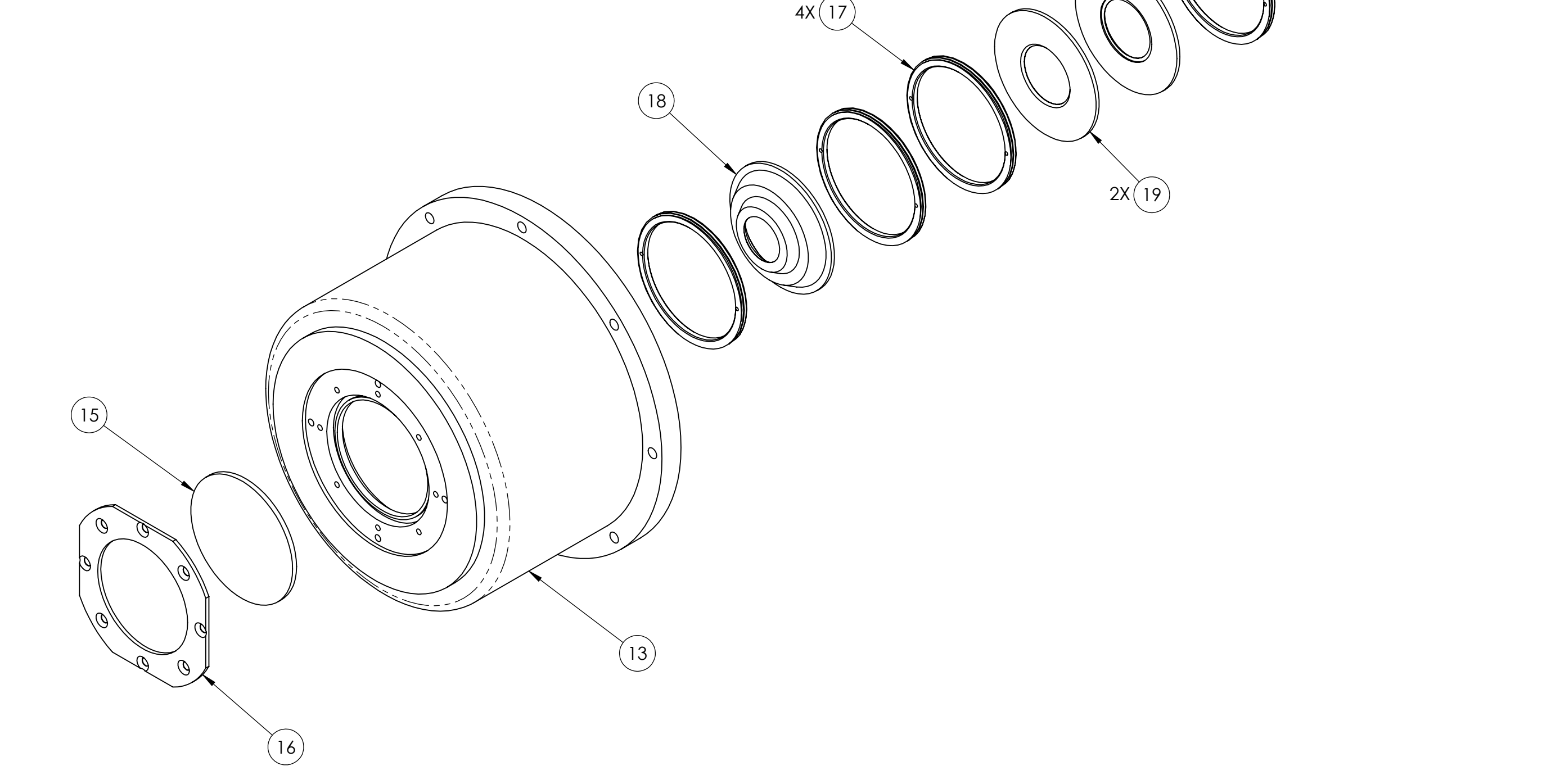
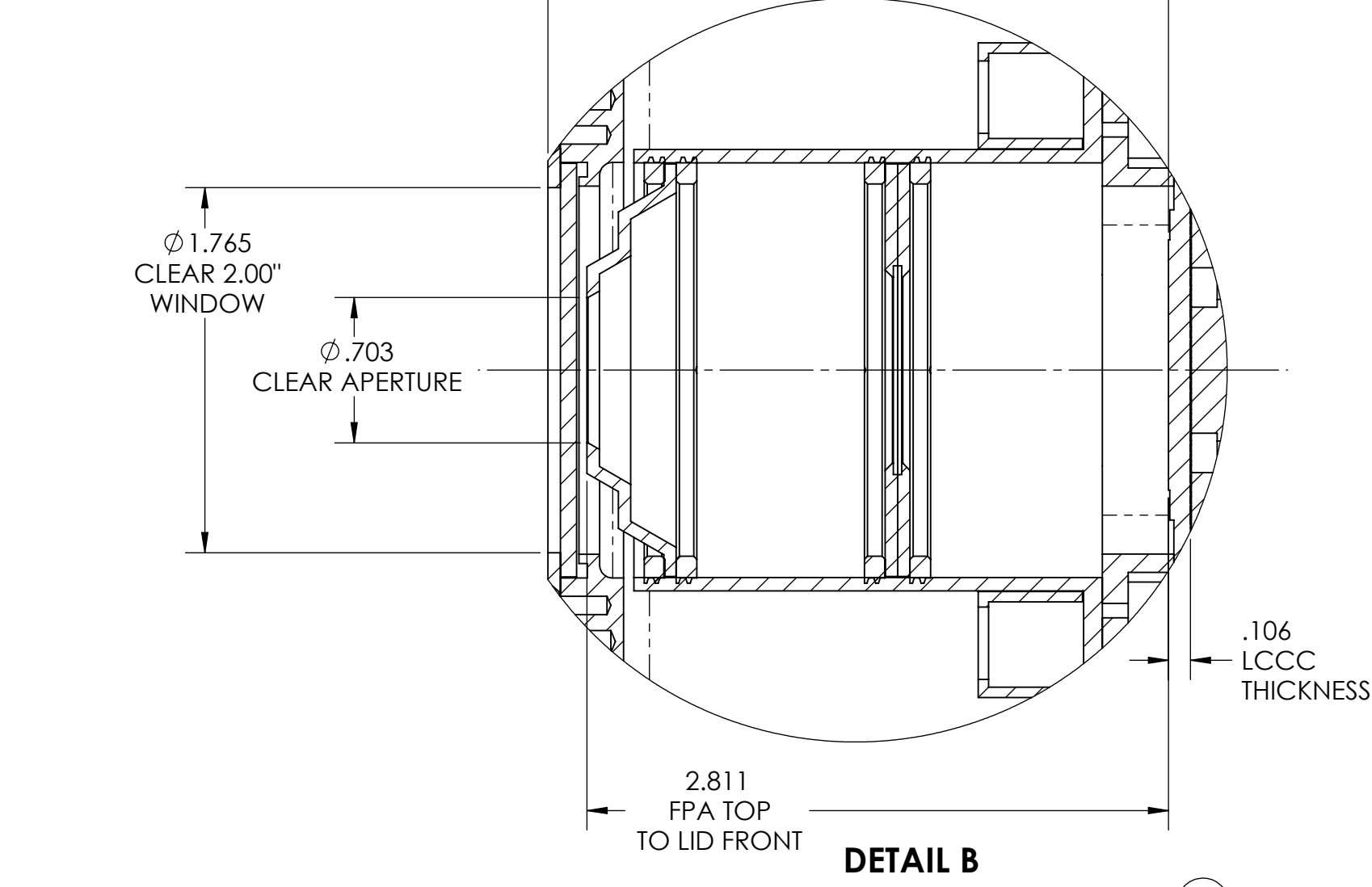
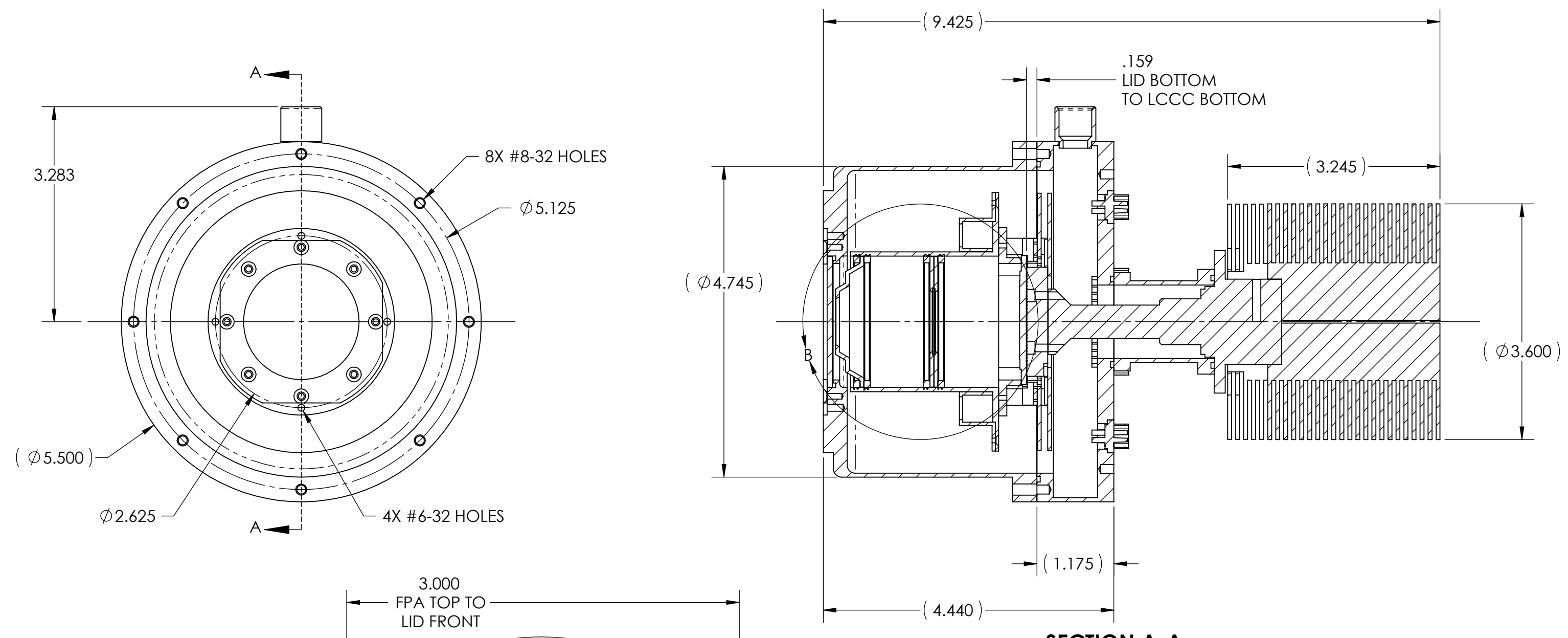


REVISION HISTORY		DATE	APPR.
REV	DESCRIPTION		
A	INITIAL RELEASE	7/20/09	



ITEM NO.	PART NUMBER	DESCRIPTION	QTY.
1	WLD-019	WELDMENT, BASE & VACUUM PORT	1
2	FLG-003-01	MOD- FLANGE, PEDESTAL ADAPTER, GENERIC	1
3	PED-005	PEDESTAL, COOLER	1
4	HSK-002	HEAT SINK, BOTTOM	1
5	HSK-003	HEAT SINK, TOP	1
6	CCB-014	COLD CLAMP BASE, 124 PIN, XL	1
7	CHP-017	CHIP, 124 PIN, XL	1
8	MTB-011	MOTHER BOARD, 124 PIN, XL	1
9	DTB-011	DAUGHTER BOARD, 124 PIN, XL	1
10	TXI-004	SOCKET ARM, 31 PIN	4
11	CCT-034	COLD CLAMP TOP, 124 PIN, XL	1
12	CTB-039	COLD TUBE, CRYOSORB	1
13	RLD-019	LID, ROUND, 1.00\"/>	

INTERPRET GEOMETRIC TOLERANCING PER ASME Y14.5-1994
 UNLESS OTHERWISE SPECIFIED:
 BREAK SHARP EDGES, 0.15 MAX
 DIMENSIONS ARE IN INCHES
 TOLERANCES: .XX ±.01
 .XXX ±.005
 ANGLES: 12°
 MACHINE SURFACE: 125

DESIGNED: A. PROCTOR 7/8/09
 CHECKED: A. PROCTOR 7/20/09
 APPROVED:

CB, Inc. 87 SANTA FELICIA DRIVE
 GOLETA, CA 93117
DEWAR ASSY - CLOSED CYCLE, LG5
CYC-015

MATERIAL: SEE PARTS LIST
 FINISH: VARIOUS
 ACT WT: .XX LBS
 CAD GENERATED DWG
 SCALE: 1:1.5 (DO NOT SCALE DRAWING)

SHEET 1 OF 1