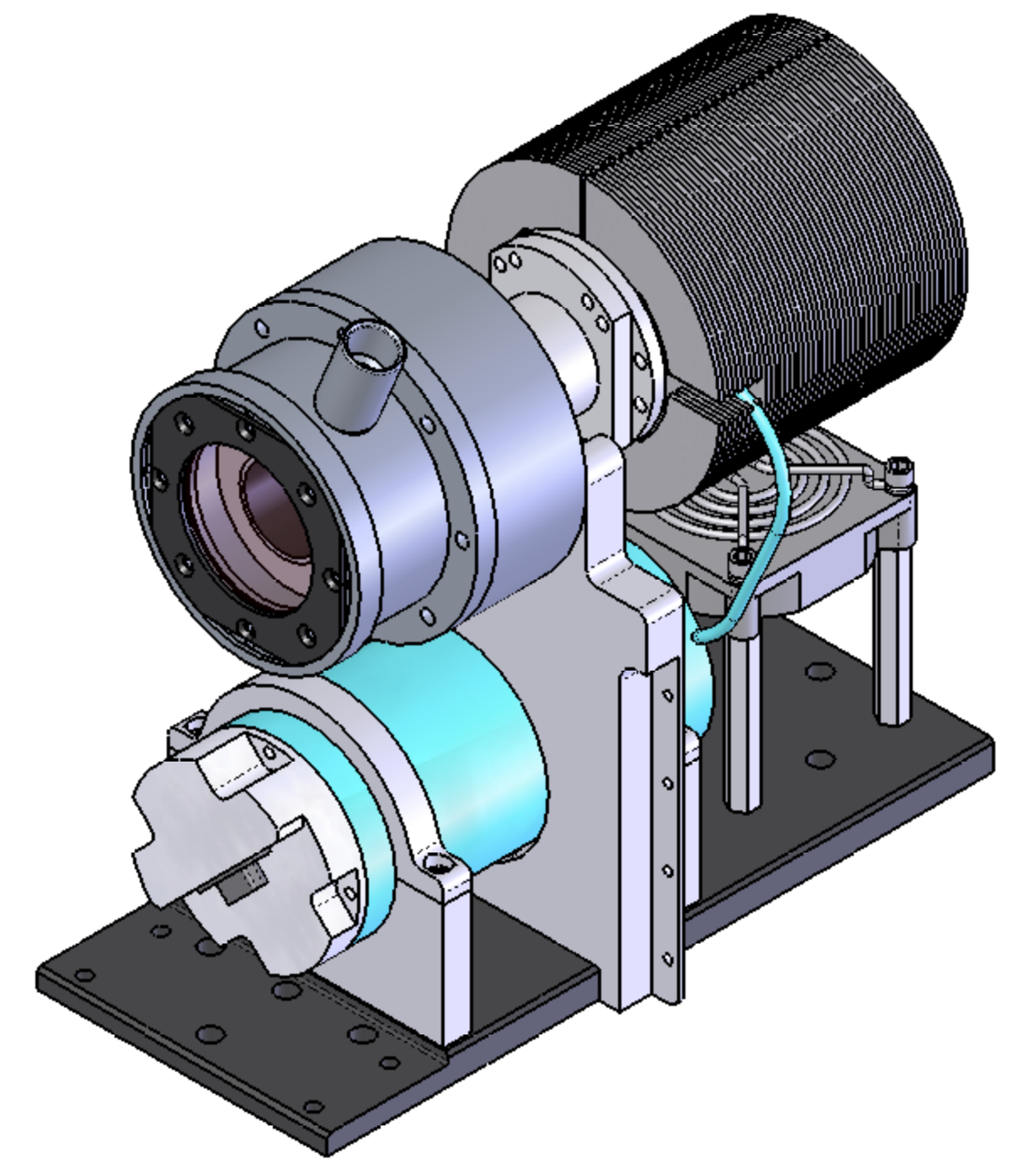
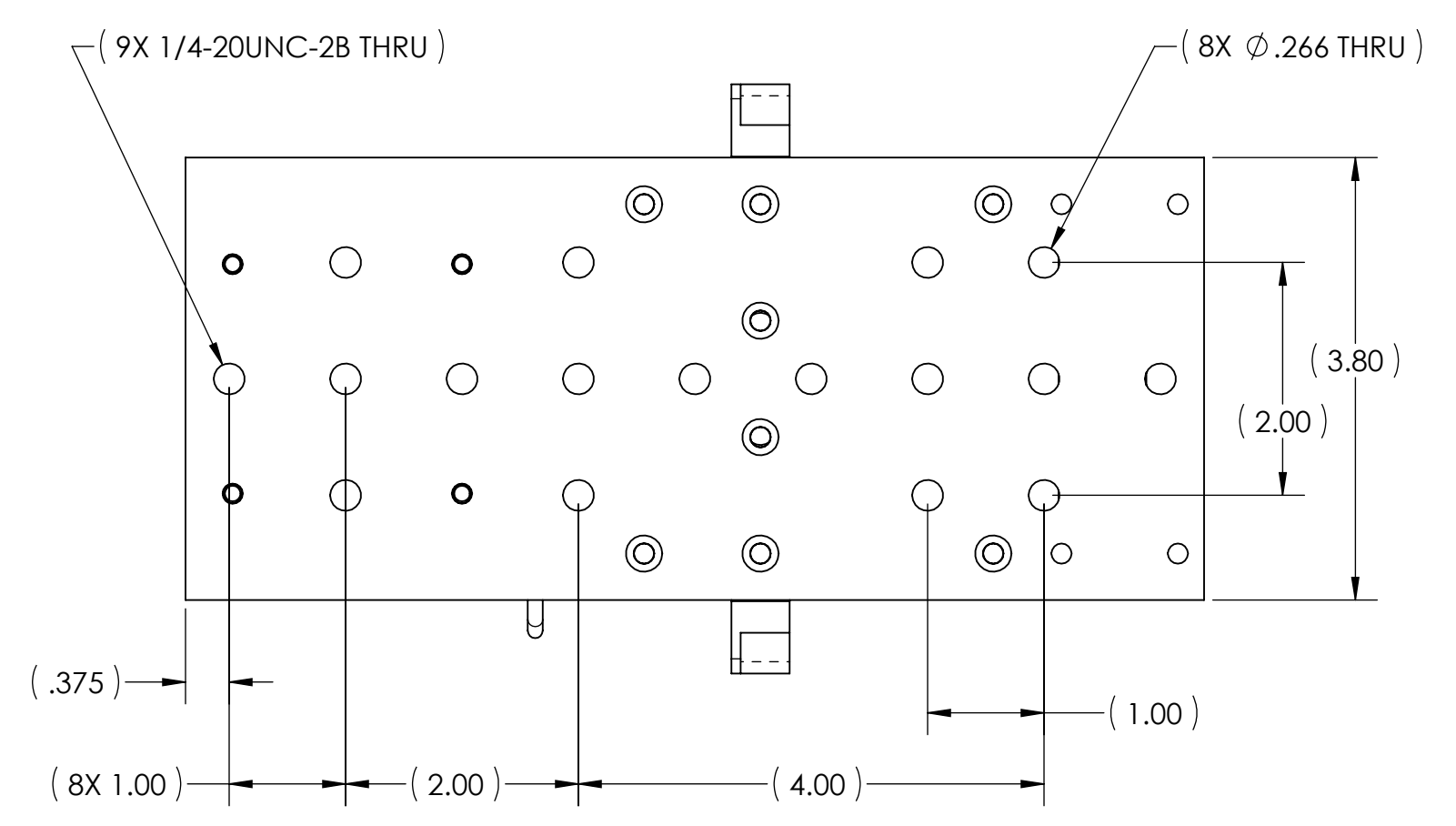
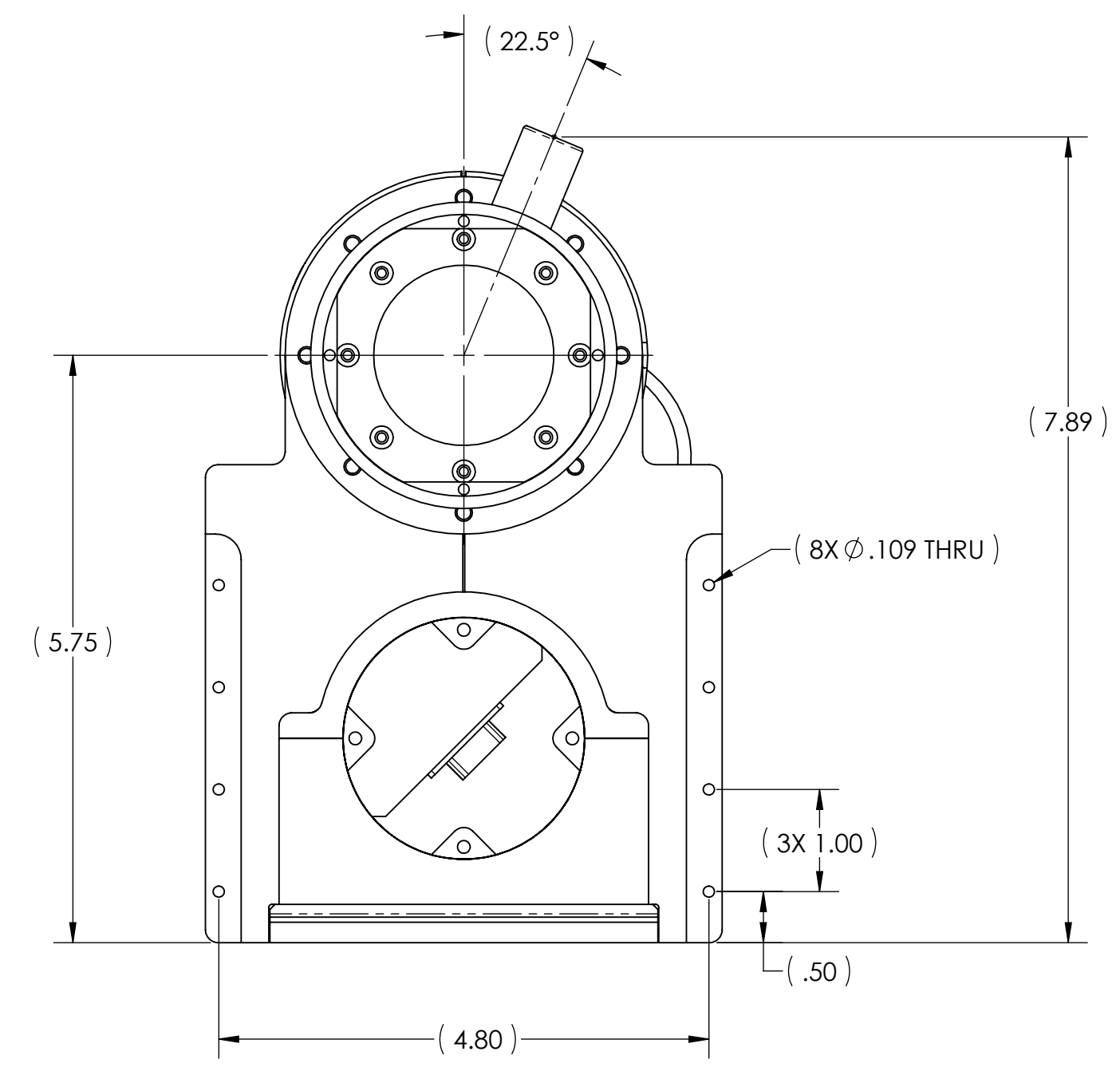
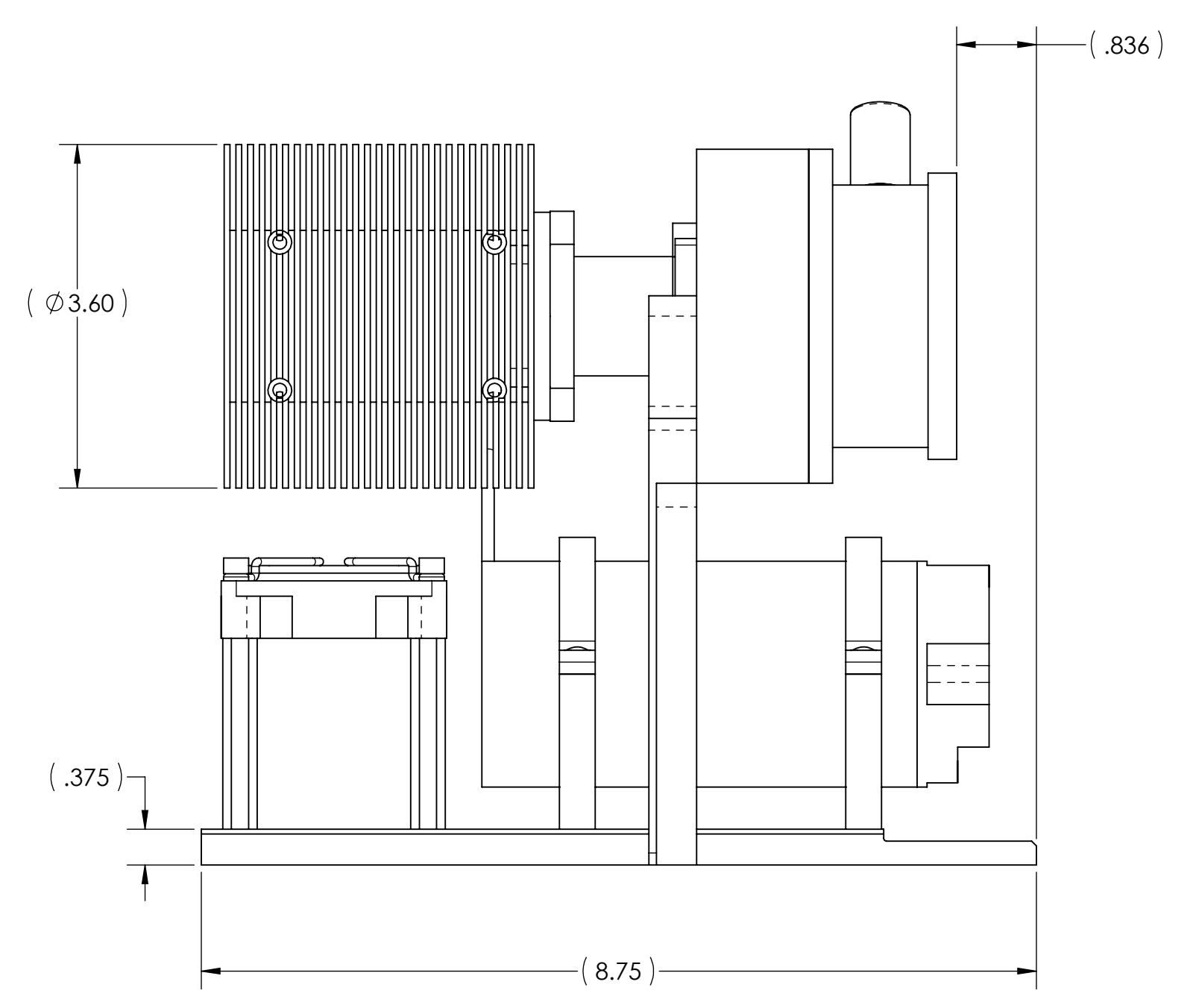
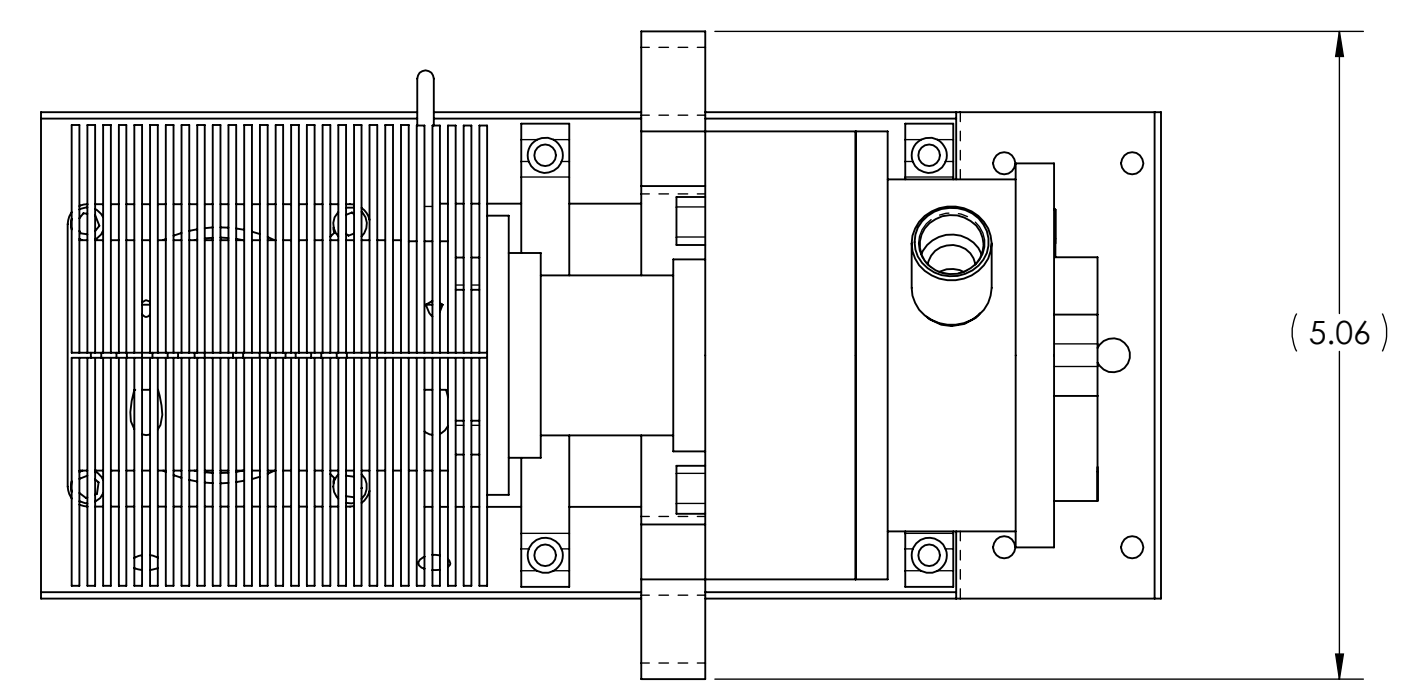


REVISION HISTORY		DATE	APPR.
REV	DESCRIPTION		
A	INITIAL RELEASE	3/9/08	



<small>INTERPRET GEOMETRIC TOLERANCING PER ASME Y14.5-1994</small> <small>UNLESS OTHERWISE SPECIFIED: BREAK: SHARP EDGES, D15 MAX DIMENSIONS ARE IN INCHES TOLERANCES: .XX ±.01 .XXX ±.005 ANGLES: ±2° MACHINE SURFACE: 125</small>		NAME A. PROCTOR A. PROCTOR	DATE 3/7/08 3/9/08	CB, Inc. 87 SANTA FELICIA DRIVE GOLETA, CA 93117 DEWAR, CLOSED CYCLE w/ 1.5W COOLER, SMALL
<small>PROPRIETARY AND CONFIDENTIAL THE INFORMATION CONTAINED IN THIS DRAWING IS THE SOLE PROPERTY OF CB, INC. ANY REPRODUCTION IN PART OR AS A WHOLE WITHOUT THE WRITTEN PERMISSION OF CB, INC. IS PROHIBITED.</small>	MATERIAL: VARIOUS FINISH: VARIOUS	SIZE: DWG NO. D	REV: A	
<small>ACT WT: .XX LBS</small>	<small>CAD GENERATED DWG</small>	<small>SCALE: NONE</small>	<small>SHEET 1 OF 1</small>	